

MaxSea version : TimeZero v2.1 (ECS/PLOT)
 Windows: Windows 7 / Windows 8
 Update: September 2014

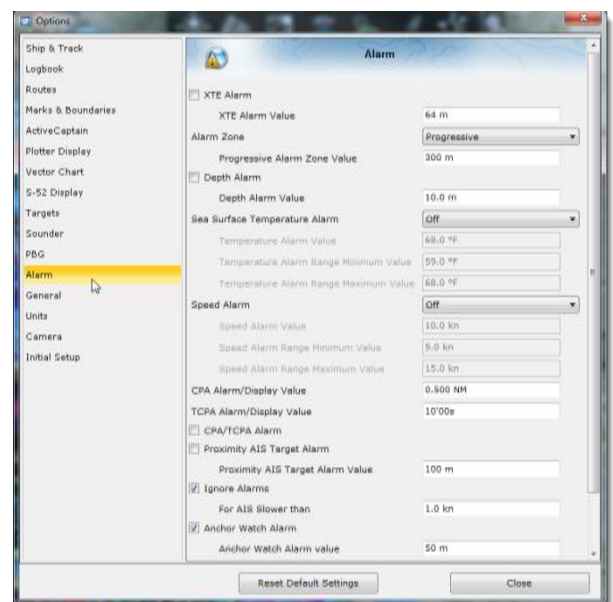
MaxSea TimeZero Alarms

The Alarm options allow you to configure all of the various alarms and warnings that can be triggered by the software. Alarms are displayed at the very top of the screen. The Alarm Sound can then be customised for each individual Alarm. This allows you to trigger various sounds according to the type of Alarm.

Alarm types

The Alarm options allow you to configure all of the various alarms and warnings that can be triggered by the software :

- [XTE Alarm \(Cross Track Error\)](#)
- [Alarm Zone](#)
- [Depth Alarm](#)
- [Sea Surface Temperature Alarm](#)
- [Speed Alarm](#)
- [CPA/TCPA Alarms](#)
- [AIS Alarms](#)
- [Anchor Watch Alarm](#)

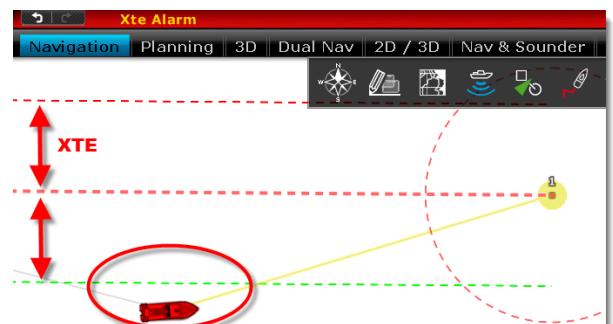
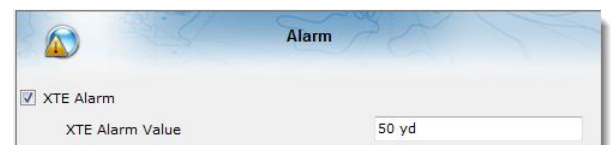


XTE Alarm (Cross Track Error)

An alarm is triggered when the vessel has strayed a designated distance "XTE Alarm Value" from the active route.

Note: you can display a graphic representation of the Cross Track Error limit on the chart by enabling the "Display XTE Alarm Lines" which is available in the Route options.

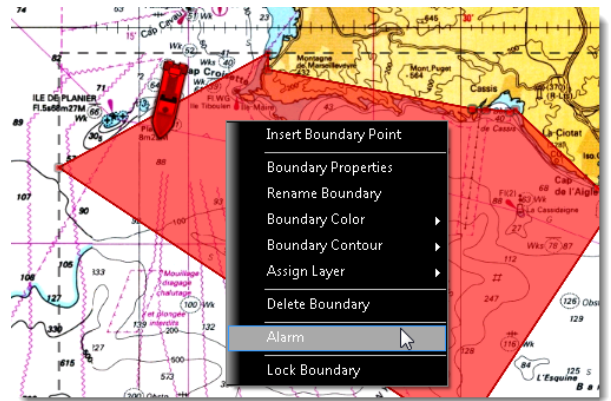
As soon as the boat is out of the XTE limit, the alarm will be displayed in red, on the top of the screen, and when enabled the alarm sound is triggered.



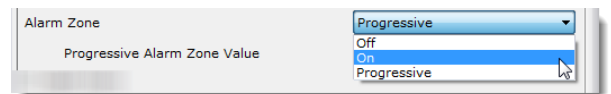
Alarm Zone

The user can create a Boundary Area on the chart and then set it as an Alarm Zone by right-clicking on it and selecting "Alarm". When an alarm zone is activated, the contour line of the area will blink

Once Boundary Alarms are created, the "Alarm Zone" setting will define their behaviour:

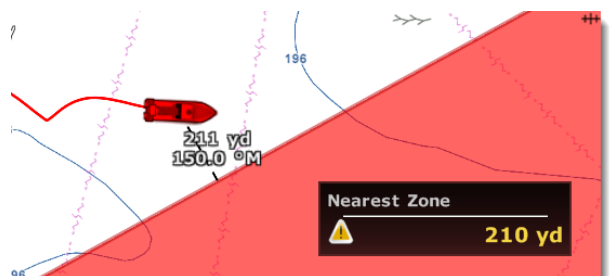
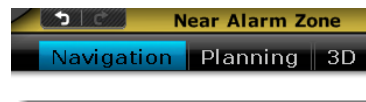
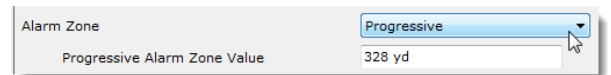


- **OFF:** No alarm will be triggered even if the boat enters an Alarm Zone
- **ON:** An alarm will be triggered as soon as the boat enters any Alarm Zone



- **Progressive:** When the boat reaches the distance set in "Progressive Alarm Zone Value" from any Alarm Zone:

- ⇒ A notification will be displayed
- ⇒ A distance and bearing vector is displayed on the chart between vessel and surface



Note: Dedicated NavData ("Alarm Zone NavData") can be setup to display the distance from the nearest Alarm Zone at any time.

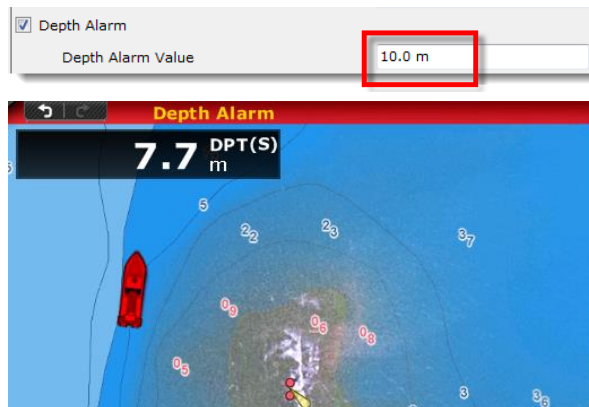
When the boat enters any Alarm Zone, the alarm will be triggered.



Depth Alarm

An alarm is triggered when the vessel passes over water that is shallower than a designated depth value.

Note: The alarm is triggered according to depth information received from the sounder only.

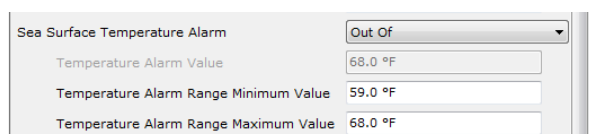
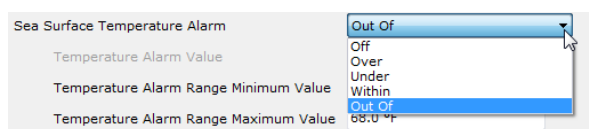


Sea Surface Temperature Alarm

An alarm is triggered when a specific condition regarding Sea Surface Temperature (SST) value is met.

The alarm status can be set from the SST Alarm dropdown menu:

- **Off:** to disable the SST alarm
- **Over:** SST is above the defined “Temperature Alarm Value”
- **Under:** SST is below the defined “Temperature Alarm Value”
- **Within:** SST is included between Minimum and Maximum range Values defined
- **Out Of:** SST is out of the Minimum and Maximum defined range values

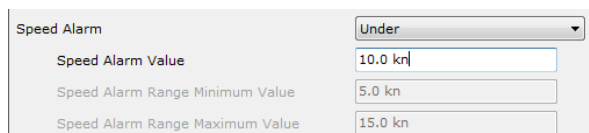
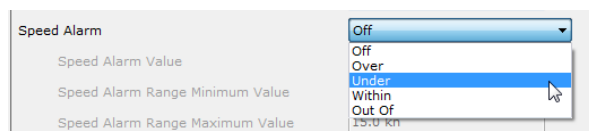


Speed Alarm

An alarm is triggered when a specific condition regarding the speed value of your vessel is met.

The alarm status can be set from the Speed Alarm dropdown menu:

- **Off:** to disable the Speed alarm
- **Over:** Speed is above the defined “Speed Alarm Value”
- **Under:** Speed is below the defined “Speed Alarm Value”
- **Within:** Speed is included between Minimum and Maximum range Value defined
- **Out Of:** Speed is out of the defined Minimum and Maximum range values



CPA/TCPA Alarms

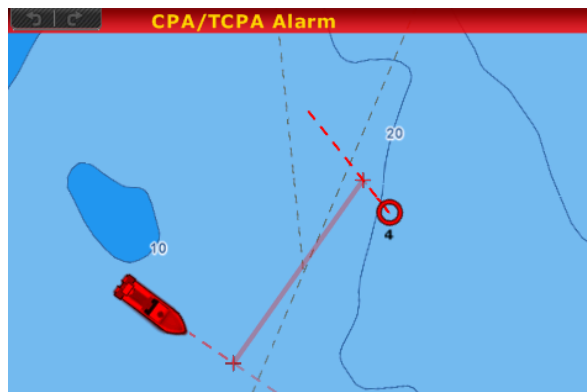
CPA/TCPA Alarm/Display Value

Defines the CPA and TCPA values for which a target is considered dangerous and displayed in red on the chart.

CPA Alarm/Display Value	0.500 NM
TCPA Alarm/Display Value	10'00s
<input checked="" type="checkbox"/> CPA/TCPA Alarm	

CPA/TCPA Alarm

An alarm is triggered when a target becomes dangerous.



AIS Alarms

Proximity AIS Target Alarm

An alarm is triggered when the vessel moves within the designated distance from an AIS target.

<input checked="" type="checkbox"/> Proximity AIS Target Alarm	
Proximity AIS Target Alarm Value	100 m
<input checked="" type="checkbox"/> Ignore Alarms	
For AIS Slower than	1.0 kn

Ignore for AIS slower than...

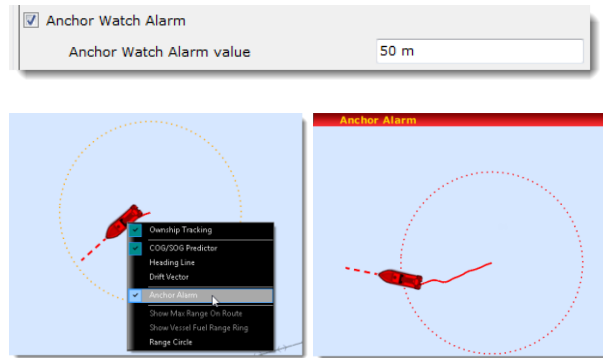
Use this setting to prevent AIS targets that are not moving from triggering the proximity or CPA/TCPA alarm. This setting is very useful in harbor to prevent safe target (moored or docked boat) from raising unwanted alarms.



Anchor Watch Alarm

An alarm is triggered when the vessel strays a designated distance from where the user set anchor. You can enable/disable the Anchor Alarm by right-clicking directly on the Own Ship icon.

When activated, an orange dotted circle is displayed around the boat. When alarm is triggered the circle blinks red.



Alarm Sounds

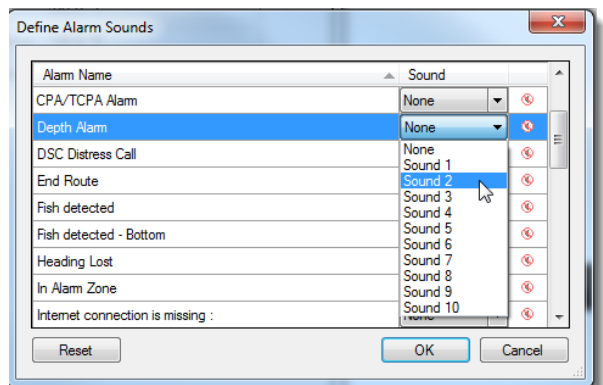
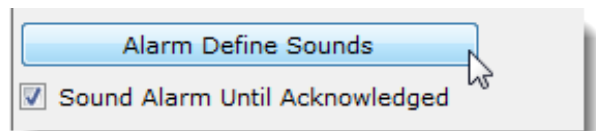
The Alarm Sounds option allows the user to assign a sound to various alarms. 10 predefined sounds are installed within the software.

Define Alarm Sounds

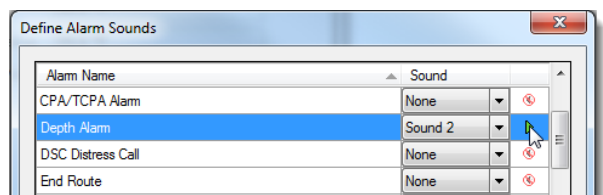
“Alarm Define Sounds” button allows you to open the dialog box allowing the user to customise the sound independently for every Alarm.

To define Alarm sound:

- Select the alarm from “Alarm Name” column
- Click on the corresponding Sound dropdown menu
- Select one of the 10 sounds from the list



When selected, you can listen to the sound by clicking the play button.



Note: It is possible to replace the default sounds by overwriting the sound files located in

“[C:\Program Files \(x86\)\MaxSea International\MaxSea Professional\Sounds](C:\Program Files (x86)\MaxSea International\MaxSea Professional\Sounds)”

Sound Alarm Until Acknowledged: When this setting is checked, the Alarm Sound will repeat over and over until the user acknowledges the alarm:

- by clicking on the status bar
- or by checking "Acknowledge" from the Alarm List

