



New MaxSea TimeZero Navigator/Explorer version 1.9.7

We are pleased to announce a free update for our revolutionary MaxSea TimeZero Software. MaxSea TimeZero Navigator and Explorer v1.9.7 include improvements that were collected from enthusiastic suggestions and feedback received from dealers and customers during the past year.

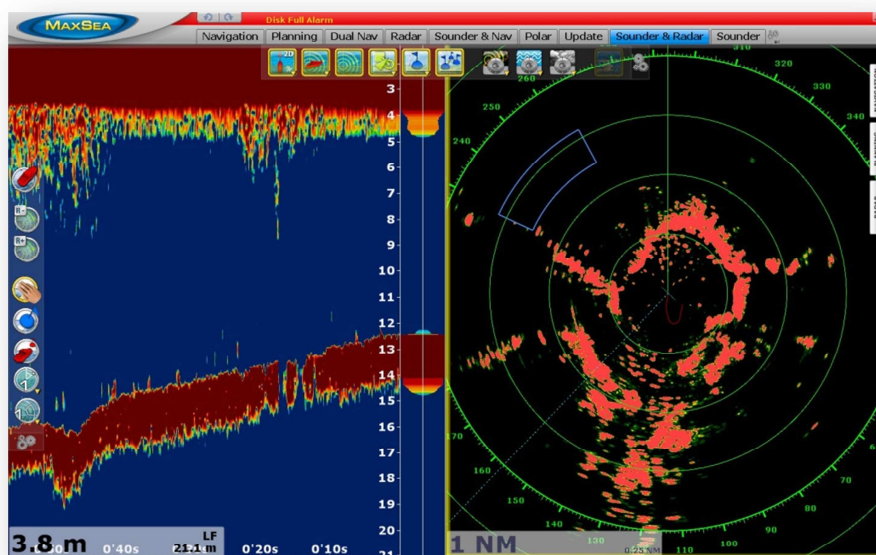
1- Furuno Integration

MaxSea TimeZero Explorer v1.9.7 offers the best integration with Furuno Radars (NavNet 3D and FAR2XX7) as well as Furuno Echo sounders (DFF1/DFF3, BBDS1 and FCV1150).

Our new version of MaxSea TimeZero Explorer converts MaxSea into a complete working station.

Radar Improvements (Explorer only)

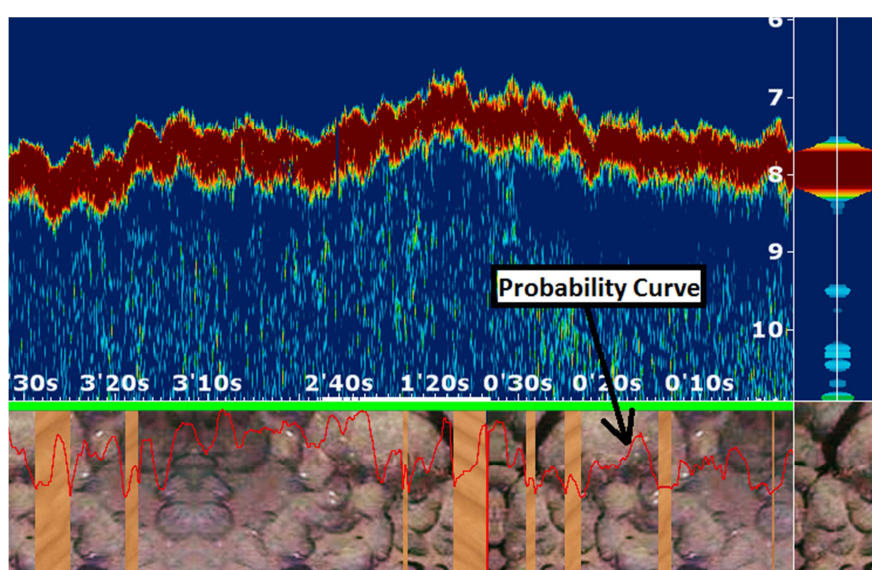
- Full Radar Adjustment directly from MaxSea TimeZero Explorer (Heading Align, Sector Blanking...).
- New Radar Picture setting that allows to precisely adjusting the contrast of the Radar Echoes in MaxSea TimeZero Explorer.
- You can press and hold the CTRL & Space key on your keyboard to hide all objects except AIS and ARPA in the Radar WorkSpace or in the Navigation WorkSpace (when the Radar Overlay is displayed). This clearly shows radar echoes, and allows acquiring target easily if you have lots of object display on top of the radar (Active Route, EBL/VRM, etc...).



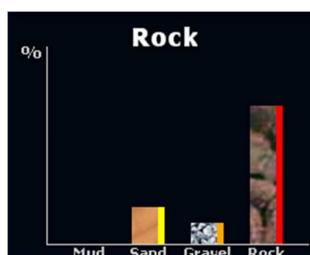
Sounder Improvements (Explorer only)

- New Bottom Classification and Bottom Hardness feature with the Furuno BBDS1 sounder:

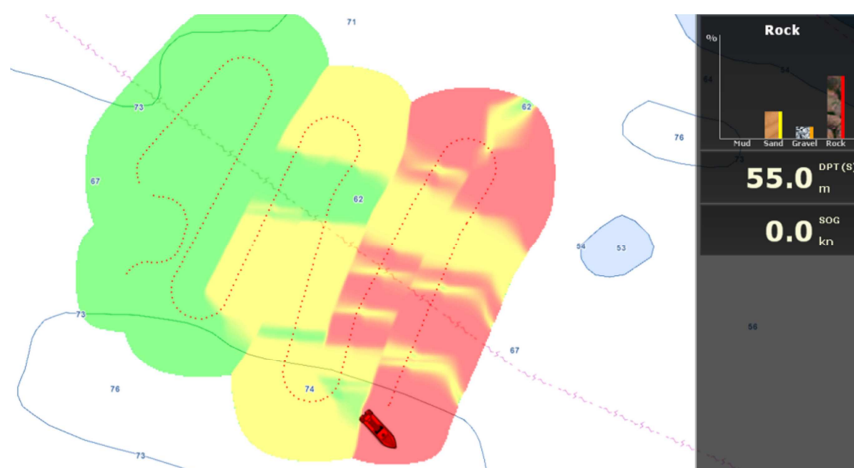
The Furuno BBDS1 Black Box Ethernet sounder can be directly connected to MaxSea TimeZero to collect depth and seabed information. MaxSea can either display Bottom Classification (using the “Aquarium” mode of the Sounder, using the “Bottom Classification” NavData or using the track in variable color) as well as Bottom Hardness using a color scale on the chart (similar to the depth shading). In addition to providing the seabed information, the BBDS1 also sends the probability of discrimination allowing you to know how reliable the data is in particular areas. This probability can be used in conjunction with the Bottom Hardness color scale in order to only show data in area where the probability is high (filtering out uncertain data).



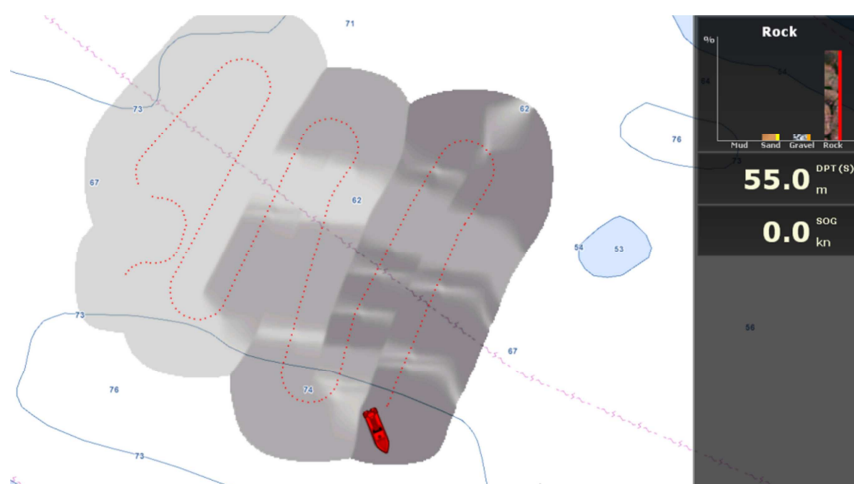
“Aquarium” mode with probability curve.



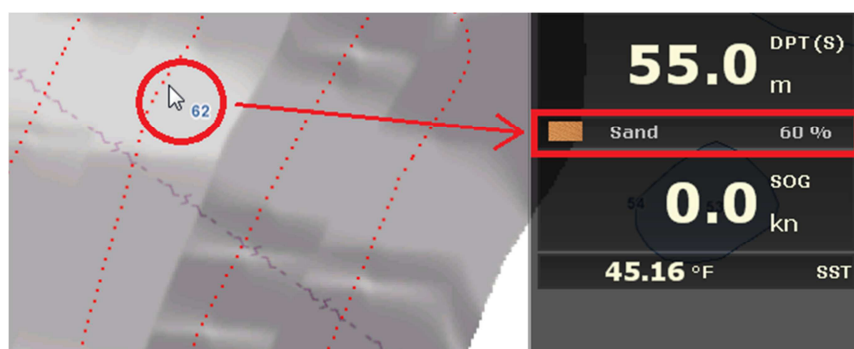
“Bottom Classification” NavData with real time probability distribution (note that the colors next to the bar graph are the same colors used for the track when Bottom Classification is chosen as a variable color).



Bottom Hardness displayed in color using the “classic” color palette.



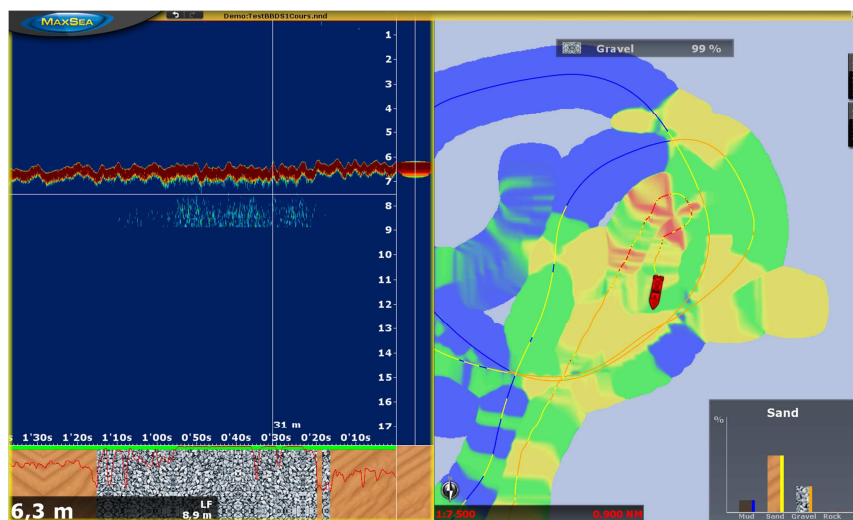
Bottom Hardness displayed using the “Black and White” color palette.



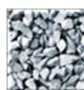










The Bottom Classification Cursor NavData allows you to move your cursor on a specific area and read the seabed with its probability.



Bottom classification colors:



	MUD	SAND	GRAVEL	ROCK
Aquarium view				
Track color (Default)				
Bottom Hardness color (Classic color palette)				
Bottom Hardness color (Black & White)				
Bottom Hardness color (Inversed Black & White)				

MaxSea TimeZero Explorer paired with the Furuno BBDS1 offers a very powerful seabed analysis tool at a very affordable price. Make sure to contact your Furuno Dealer for more information about the BBDS1 (for suitable transducers compatibility).

Note: The optional PBG or Sounder Module is required to receive and see data from the BBDS1. The optional PBG module is required to record the Bottom Hardness of the BBDS1.



- **FCV1150 compatibility:** allowing you to display the Echogram directly in MaxSea TimeZero.
*Note: The FCV1150 needs to be updated with software v3.02 (refer to your Furuno Dealer).
MaxSea TimeZero Explorer with the optional PBG or Sounder module is required.*
- **Full Sounder Adjustment** (including transducer setup) for DFF1/BBDS1 and DFF3 directly from MaxSea TimeZero.
Note: MaxSea TimeZero Explorer with the optional PBG or Sounder module is required.

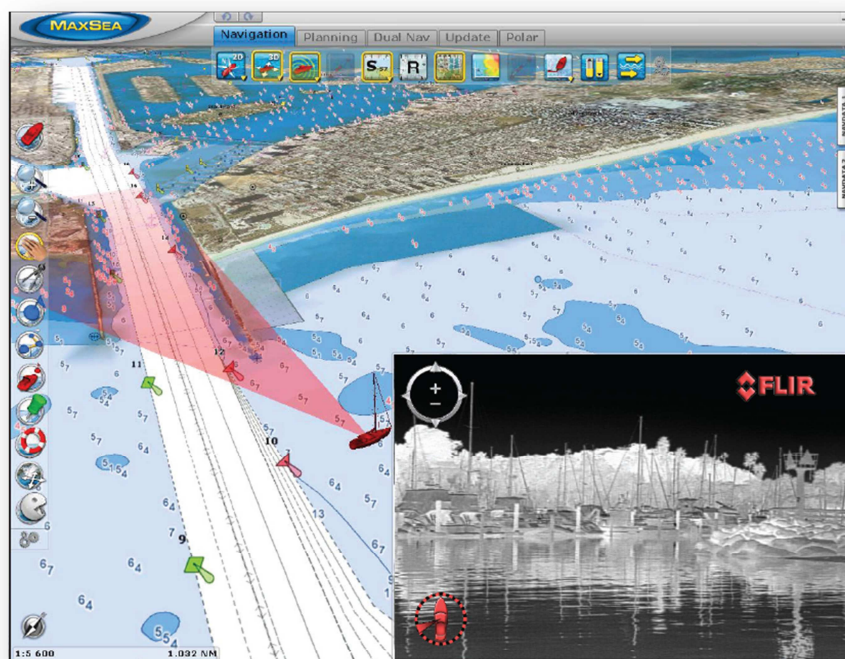


FURUNO

2- FLIR Cameras Integration (Explorer only)

The FLIR M-Series integration has been further improved with MaxSea TimeZero Explorer:

- It is possible to switch the Video Source from IR or Visible (on models having that capability) by right clicking on the Camera NavData.
- It is possible to change the various scenes and color palette of the camera by right clicking on the Camera NavData.
- It is possible to launch the scan mode of the camera by right clicking on the Camera NavData.
- It is possible to trigger the “Home” position of the camera by right clicking on the Camera NavData.
- The Camera Height (vertical position of the camera) can be entered for accurate automatic tilt (when locking on an object or position near or far from the boat).
- The Camera can be set up to automatically lock on the Active Waypoint when a route is activated.
- The Camera can be set up to automatically pan/tilt when a MOB is triggered.
- The Camera can be set up to automatically zoom (1X or 2X) when locking on an object or position (the distance at which the camera begins to zoom can also be configured).





3- Miscellaneous New Features and Improvements:

- You can backup and restore “collections”. A collection contains all your Navigation Objects (Routes, Marks, Pictures, Logbooks, Tracks...). This is very useful when you want to back up your data or when you want to transfer all your data to another computer.
- You can select multiple items from the chart or from the list using the Shift or CTRL key. This allows performing various actions on multiple objects at the same time (delete, change color, change visibility, etc...).
- The AIS MMSI or Name (when available) is used as a default track name when tracking AIS targets.
- A new “Route Layover” column allows to set pause at specific waypoint of a route.
- A new AIS and ARPA NavData list can be displayed to show information about ARPA or AIS targets that surrounds you.
- MaxSea TimeZero can read AIS data from the NMEA2000 Actisense gateway (compatible with the standard NMEA2000 AIS PGNs).
- The “Find” window has been improved to search name in the Tide and ActiveCaptain database. This allows you to search place even if Internet is not available.
- You can manually drag the chart with the mouse while creating a route (no need to touch the edge of the screen).
- A logbook event can be triggered when a waypoint is switched along a route (available as a new logbook condition).
- True Wind Angle/Speed can be computed by TimeZero from Apparent Wind Angle/Speed if the wind instruments do not send that information.
- HSC and Depth sentence has been added to the Pilot Output configuration.
- Tides & Currents data has been improved in North America.

4- Main Bug Corrections (non-exhaustive):

- AIS Online has been fixed.
- Fixed a problem that prevented to display the Depth Shading in the Planning WorkSpace.
- Various problems have been fixed in dual screen (for example, pop-up windows are now displayed on the correct screen).
- Fixed a problem that would prevent to track AIS or ARPA target with a FLIR M-Series Camera.
- Fixed a problem that would cause to display an incorrect wind angle (shift) when doing a weather forecast animation.
- Fixed a problem with the Weather Update Wizard that would prevent users to subscribe to weather request by email.
- Fixed a problem that would prevent the detection of the Actisense NMEA2000 NGT1 Gateway when some type of USB to Serial adapter is installed.
- Fixed a problem when exporting CSV files for NavNet3D.



5- Download MaxSea TimeZero Navigator/Explorer V1.9.7

MaxSea v1.9.7 is an update provided free of charge to all of our MaxSea TimeZero Navigator or Explorer users:

- Click on the link below to download the full content of the DVD that is shipped to new customers. This Zip file contains the full MaxSea installer v1.9.7 (with all the prerequisites), the Worldwide Base Map, as well as simulation files and various tools (for troubleshooting). This link should be used when you want to create a backup DVD:

http://download.maxsea.com/DVD_IMAGE_MXTZ_v1.9.7.zip

IMPORTANT: Make sure to unzip the file before using it. Launching the installer from the compressed Zip file will result in a partial install.

- Click on the link below to download a smaller self extracting version of the full MaxSea installer v1.9.7 (with all the prerequisites) and the Worldwide Base Map. This link can be used if you are downloading and installing the software from the same computer:

http://download.maxsea.com/MXTZ_v1.9.7.exe

- If you already have MaxSea TimeZero v1.9.x installed on your computer, you can download the following update file (which is smaller than the full installer):

http://download.maxsea.com/MXTZ_v1.9.7_Upgrade_Fromv1.9.x_Only.exe

IMPORTANT: if you have MaxSea v1.8 or lower, you must download and use the full installer (one of the first two links above).