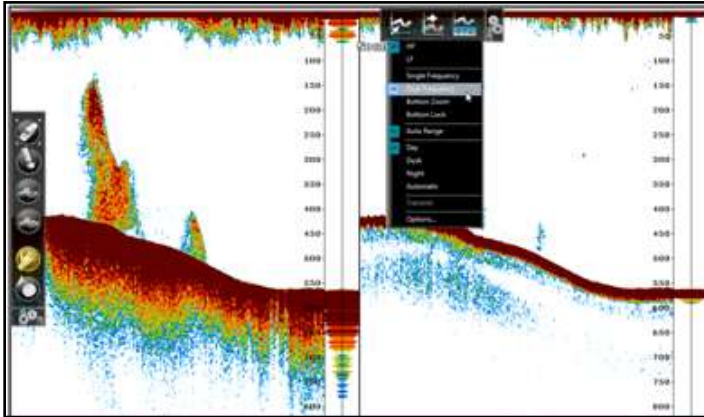


MaxSea TimeZero ECS / PLOT V2.0

New Features:

Sounder Improvements (Sounder Module Required)

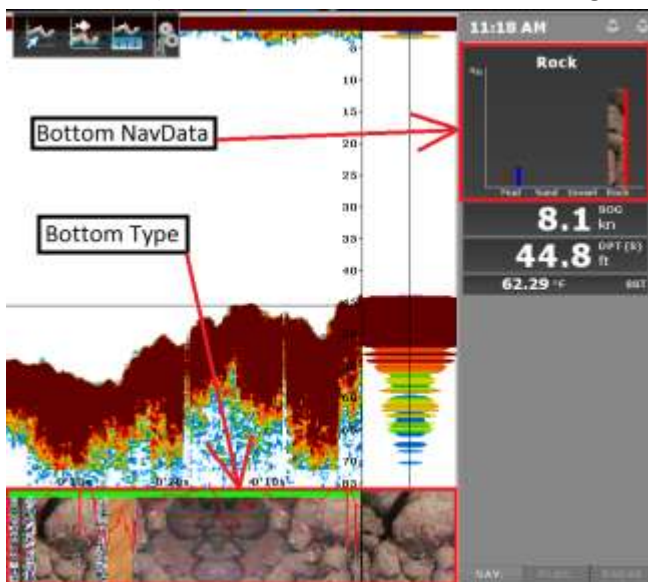
TimeZero can display two sounder pictures at the same time for Dual Frequency and Zoom Modes (Bottom Lock & Bottom Zoom):



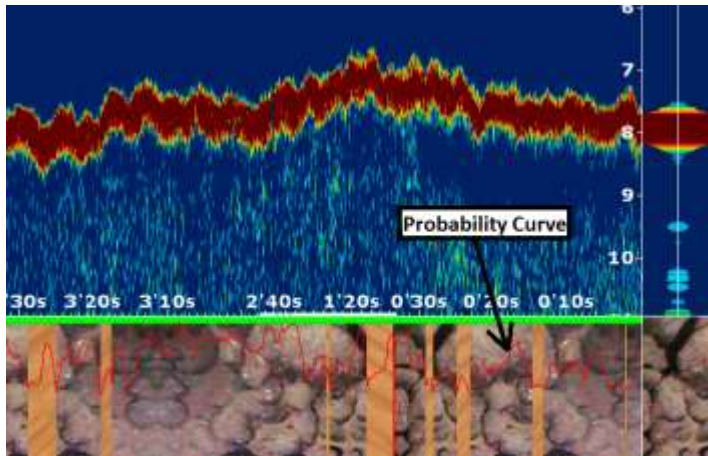
Paired with a Furuno Ethernet Sounder, TimeZero is the most powerful PC Sounder solution available on the market.

Bottom Discrimination with Furuno BBDS1 (Sounder Module Required)

The Furuno BBDS1 Black Box Ethernet sounder can be directly connected to TimeZero to collect depth and seabed information. TimeZero can display Bottom Classification (under the sounder echogram or in the NavData) as well as Bottom Hardness using a color scale on the chart (with MaxSea TZ PLOT).

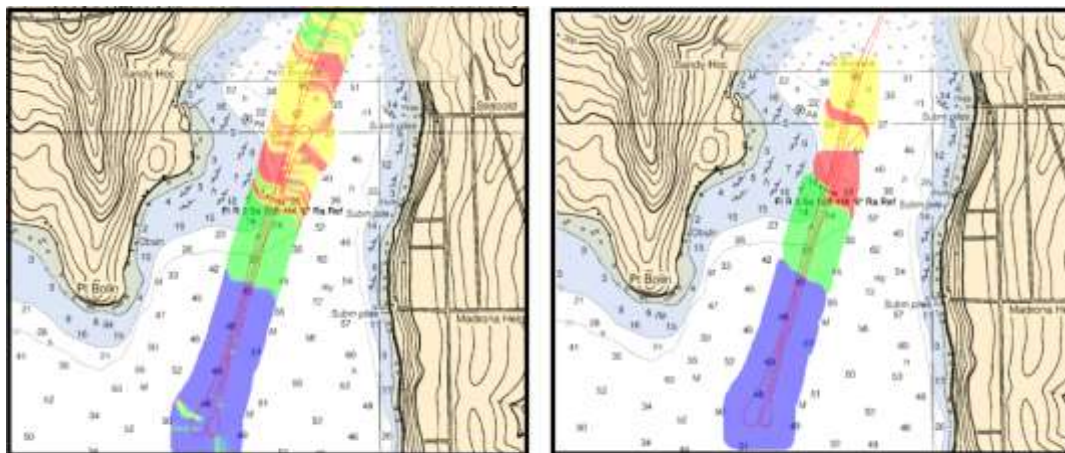


A unique feature of the BBDS1 is that it also sends the probability of discrimination, allowing you to know how reliable the data is in particular areas.



"Aquarium" mode with probability curve

This probability can be used in conjunction with the Bottom Hardness color scale to show data only in areas where the probability is high (filtering out uncertain data):



"Unfiltered" Bottom Hardness

Bottom Hardness with points over 70% probability

These unique features of TimeZero make the BBDS1 a very powerful solution to increase your productivity by analyzing the bottom type before you drop your fishing gear.

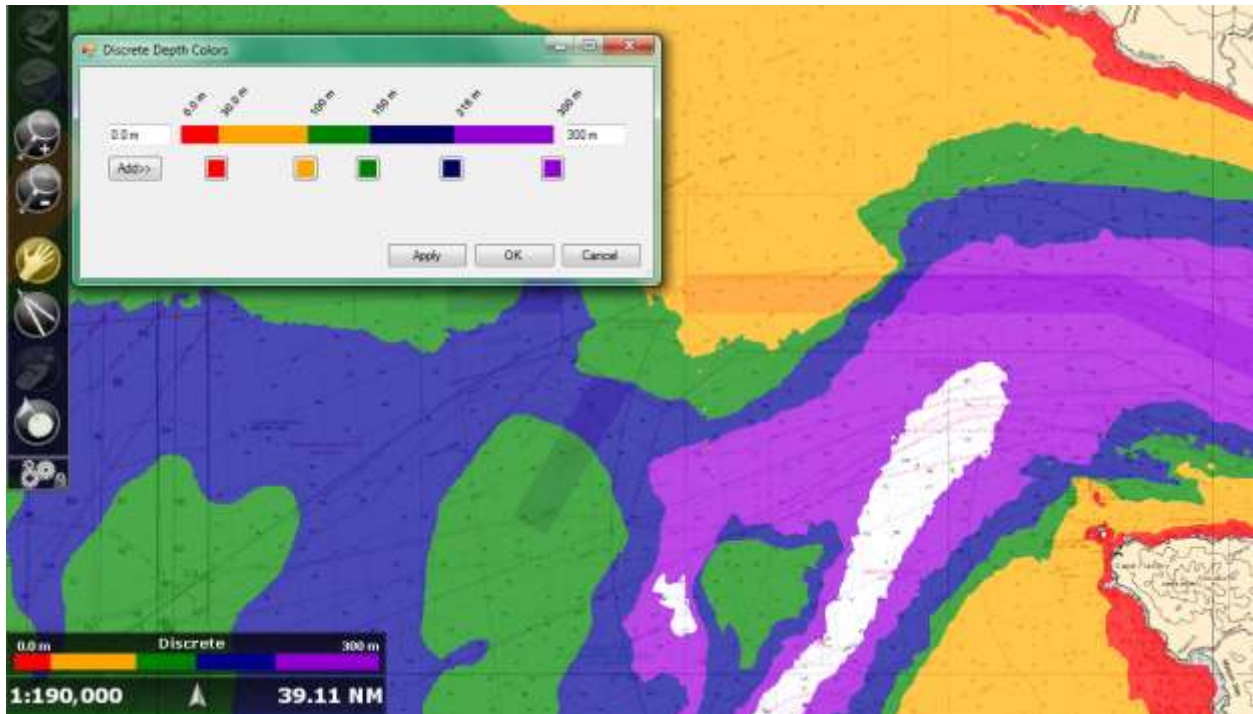
IMPORTANT: The BBDS1 only works with select Transducers (see below), and the Bottom classification performs only from 5-100 meters (slightly deeper performance may be possible, but has not been tested or verified)

Transducer	Description	BBDS1
520-5PSD	600W Plastic Thru-Hull	✓
520-5MSD	600W Bronze Thru-Hull	✓
525-5PWD	600W Plastic Transom Mount	✓
525STID-MSD	600W Bronze TH Multi-Sensor	✓
525STID-PWD	600W Plastic TM Multi-Sensor	✓
CA50/200-12M*	1kW Bronze Thru-Hull	✓
CA50/200-1T*	1kW Rubber Coated	✓

*MB1100 is a Required Option

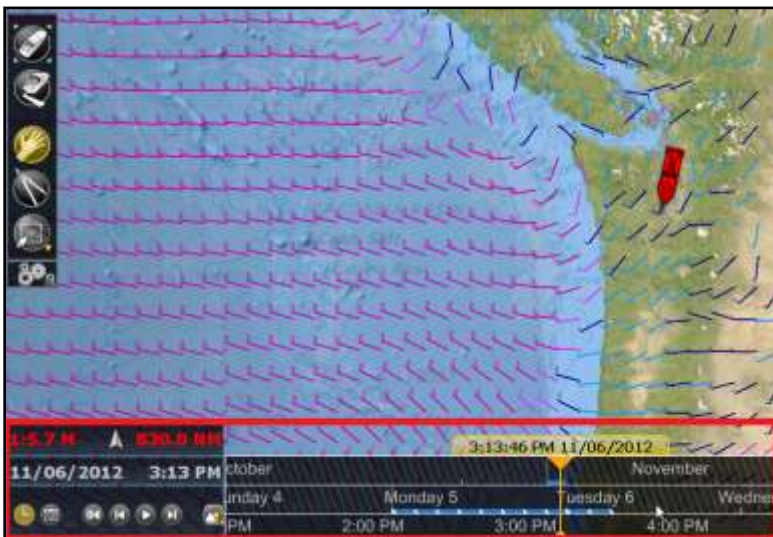
Discrete Depth Shading

The Depth Shading can be set to a user selectable discrete color palette. This allows specific depths to be highlighted with specific colors:



New Time Bar

TimeZero introduces a brand new Time Bar available in the Planning WorkSpace at the bottom of the screen:



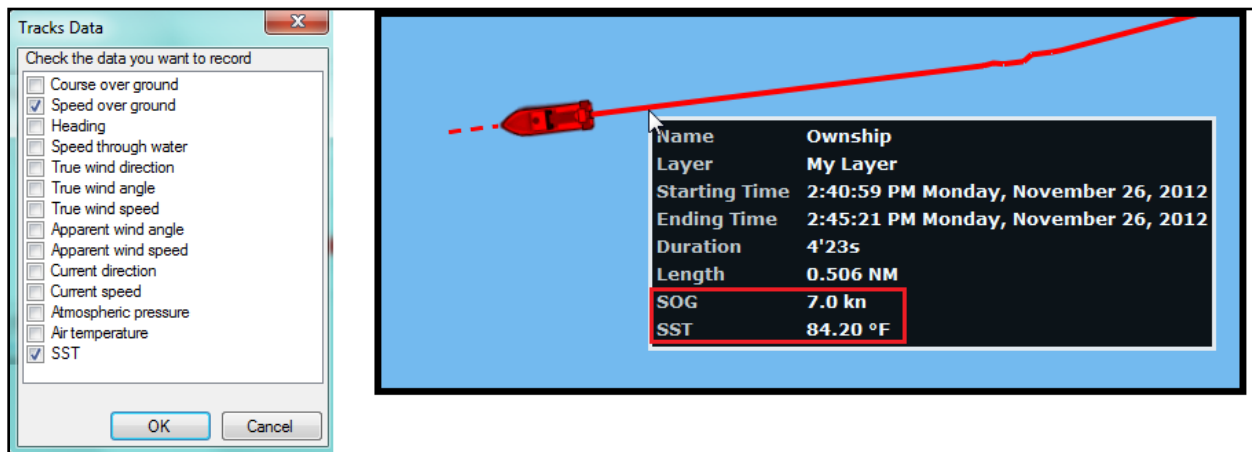
The Time Bar can be set in various modes (Tide, Weather or Route), adjusting the date and playback speed automatically (for animation):



The Time Bar makes it also very easy scrolling to any time and date to check conditions such as Weather, Tides and Currents.

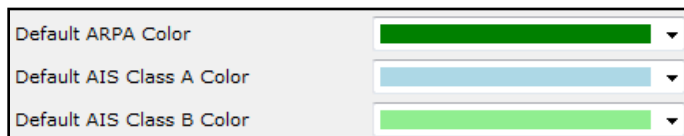
Track Info Points

You can set TimeZero to record additional data within the track and display them by putting the cursor over the track. TimeZero will display generic track information (such as the name, length, etc...) as well as the recorded information contained in the track point nearest to cursor position:

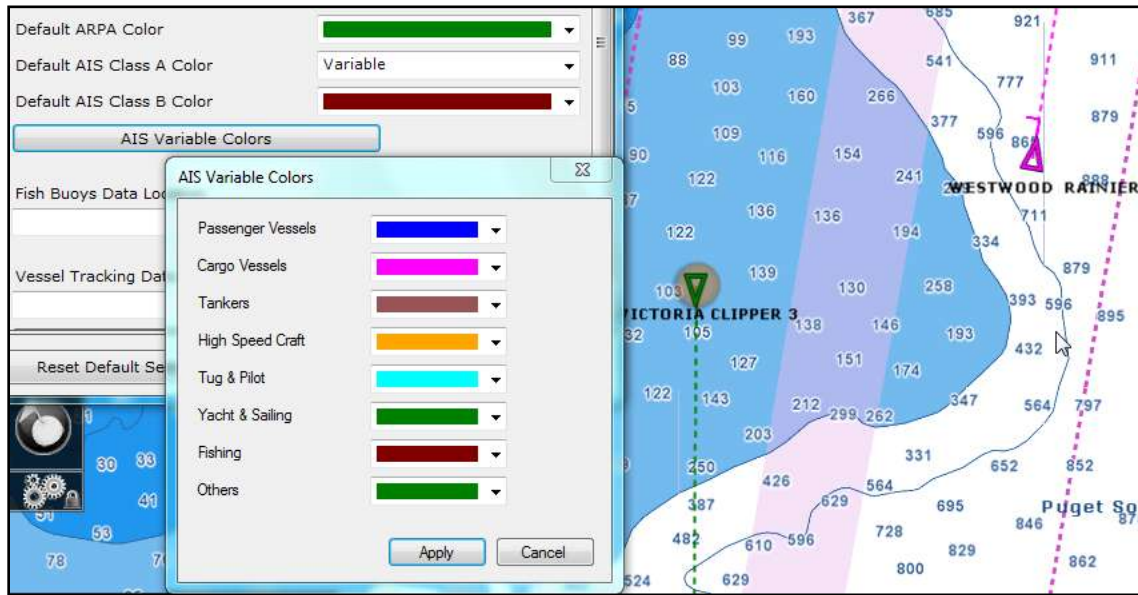


Target Color & Size

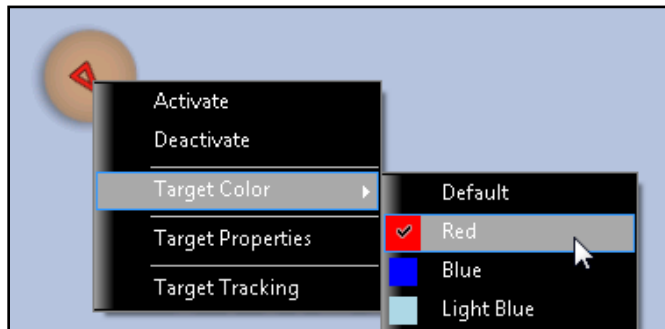
The default color for ARPA and AIS target can be changed in the Target Options:



In addition, AIS Targets can be set to specific colors according to the AIS target Status:



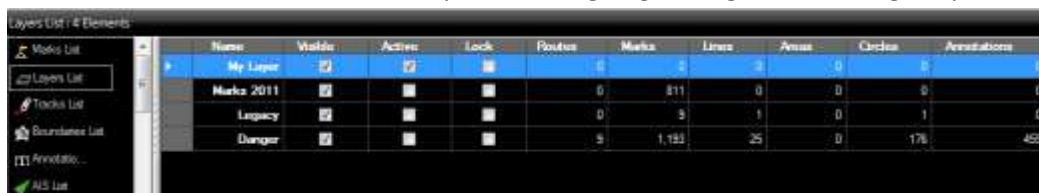
Note that you can always overwrite the default color of a specific target by right clicking and assigning a new color:



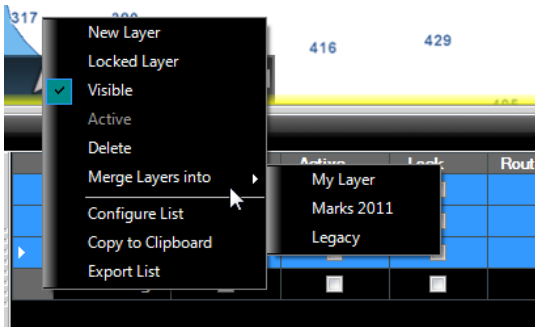
This can be useful when you want to track a fleet. TimeZero will remember the AIS color selection even after restarting the software.

Layer Management:

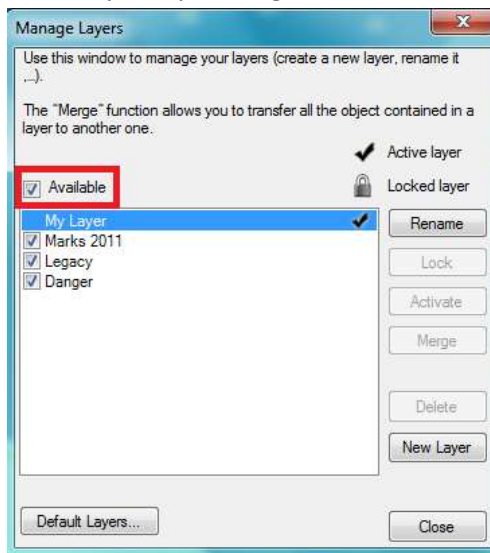
- Layers can be locked by the user to render all objects it contains “read only”. This will prevent critical marks and tracks to be accidentally modified.
- The layer list now allows you to perform various quick actions on layers. You can rename, show/hide, lock or select an active layer without going through the “Manage Layer” window:



Multiple layers can be selected from the list and the right click contextual menu can be used to set multiple layer properties at the same time:



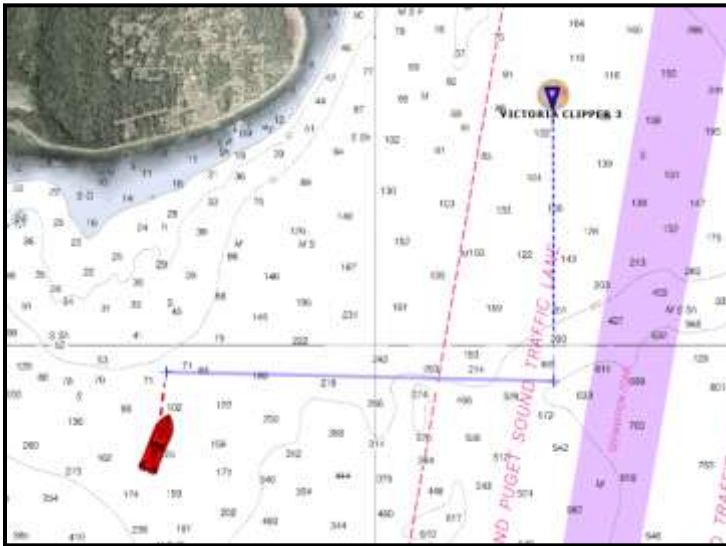
- Layers can be enabled or disabled from the “Manage Layer” window to manage large amount of data. When layers are disabled, they are ignored by TimeZero, allowing you to work on a specific set of layers during your fishing trip without being bothered by all your layers (that you may just want to keep for archive purpose). You can enable/disable layers individually or enable/ disable all the layers by clicking on the checkbox displayed in the title:



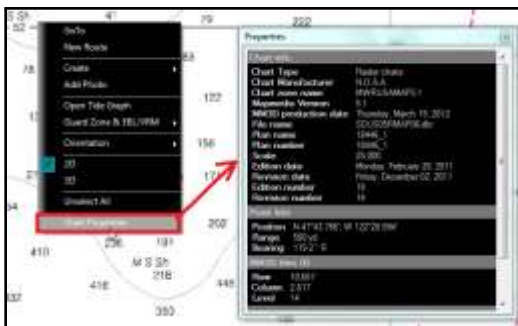
Various New Features

- TimeZero V2 is officially compatible with Windows 8 in addition to XP SP3 and Windows 7 (compatibility with Windows Vista has been dropped)

- Graphic CPA: a line displaying the predicted passing point of an AIS target can be displayed on the chart:



- Inertial Scrolling on charts
- Auto Chart Selection: TimeZero will automatically select the best chart source available for the zoom level and area.
- New Speed and Temperature alarms can be set to trigger alarms when specific Speed or Temperature values are reached (over, under, within, out of)
- The “Default Target” layer was split in “AIS” and “ARPA” allowing customers to record AIS and ARPA track in specific distinct layer automatically
- Speed (SOG) is now recorded in AIS and ARPA track (and displayed with the Track Information Point Tooltip)
- The chart properties (source, issue date, etc...) can be displayed by right clicking on the chart and selecting “Chart Properties”:



- The Course Over Ground (COG) Predictor can be set to either a vector (according to SOG) or a fix distance:



- Damping for COG and SOG can be adjusted from the “Initial Setup” Options. This setting can be useful when the GPS sends unreliable COG value (a COG that “jumps all over the place”) to smooth the value in TimeZero.
- A notification is now displayed when PBG (Bathy Recorder) is enable but when depth is missing or lost



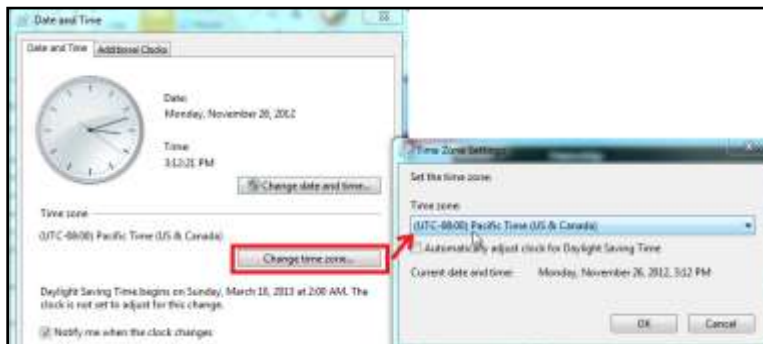
- A new “GPS Status” NavData can be added to the NavData panel. This NavData displays a clear “Good/No Good” GPS status (in green or red) as well as the predicted accuracy (based on HDOP) and the number of satellite in view:



- All the icons are kept when importing PTF files
- The Time Zone used by the software has been added to the Current and Tide window:



Note that TimeZero always uses the Time Zone selected on the PC “Date & Time” control panel :



- Chart Unlock Codes are now backward compatible. This allows you to install a previous version of the .mm3d chart file if you don’t have the current version on hand.
- The size of Targets (AIS, ARPA & DSC) can be adjusted from the Target Options
- Worldwide Current available
- A new Boat Icon can be selected (official ECS representation)
- Full Screen Camera WorkSpace (with AXIS IP camera/converter)
- Forking a route (using the Right Click contextual menu) now creates a duplicate of the Route
- Hiding Route in Radar WorkSpace also hide the Active Route

Note: The Active Route is always displayed on the Plotter and cannot be hidden

Main Bug Correction (non-exhausting)

- The "Disk Full" alarm has been removed
- Improved performance when a route is activated
- Tidal Current Direction (in NavData and Tooltip) is now always displayed in True North
- Fixed a problem causing route over 20 waypoints to not be sent correctly to a GPS (via NMEA RTE/WPL sentences)
- Fixed a problem that causes the internal buzzer of the PC to sound when a Radar Guard Zone is setup
- A bug displaying the wrong unit on some Active Captain marina has been solved
- An inversion in the CCRP settings (minus for port) has been corrected
- Improved AIS Online connection
- Locking/Unlocking Areas, Circles and lines also lock/unlock there points
- Fixed sorting in the Target NavData (does not display "lost" target in the list anymore)